

Weighing systems WS 30/60 kg B/BL



German Quality

! Benefits

- Proven EMC weigh cell for maximum precision
- Large weighing range
- Easy integration in existing production lines
- Complete functionality of EWK electronics
- Protection class IP54, optional IP65

All Minebea Intec checkweighers boast outstanding product quality. They combine innovative technology with extreme precision.

The heavy-duty weighing systems WS 30/60 kg B/BL provide reliable weight and completeness checking in various industrial fields for products and goods up to 60 kg.

Application

Used in combination with an EWK 3010 or EWK 3015 TS operator terminal, the weighing systems reliably detect filling errors – checking against the Packaged Goods Regulation (AWC), for example. Incorrectly filled packages can then be separated out, sorted and/or transported elsewhere.

Technology

The measuring system uses the principle of electromagnetic force compensation, thereby offering maximum precision even for heavy loads. Depending on the design of the system, products can also be classified, and the sorting and/or signal equipment controlled.

The weighing systems WS 30/60 kg B/BL have an intuitive user interface, a number of different interfaces and can be easily integrated into any packaging line. The small diameter of the rollers ensures products are not jolted as they move over the weigher.

Advantages

- You can select the right weighing system for your requirements every time
- You benefit from maximum precision and the highest product quality
- The weighing systems are easy to use
- You can implement a complete production control programme
- You benefit from a large selection of optional additional functions

Details

- Connection via Ethernet TCP/IP to the 'SPC@Enterprise' QA network system
- Approved in many European countries for operation in line with the Packaged Goods Regulation (AWC)
- MID compliance as an automatic checkweigher and OIML certificate R51
- In standard BL series: operator terminal separate from weighing belt
- In B series: control cabinet with mounted operator terminal
- Weighing belt available in different dimensions to suit different products
- Reject product belts and line separators can be individually selected

Options

- Individual weight output
- Trend controller for packaging or filling machines
- DeviceNet, PROFIBUS, PROFINET
- Completeness checks with floating mean value
- Monitoring of compressed air, rejection, intervals and production
- 15" display with touchscreen (default 10" with keys)
- FDA 21 CFR Part 11
- USB Print option for electronic data transfer
- Filling spout statistics
- IP65 (default is IP54)

Technical specifications

Weighing systems WS 30/60 kg B/BL

Parameter	WS 30 kg				WS 60 kg	
Gross weighing range	Up to 30 kg				Up to 60 kg	
Smallest permissible calibration value	5 g (10 g)*				10 g (20 g)*	
Standard deviation attributable to measurement error (σ) (Depends on product, throughput and ambient conditions)	From 0.5 g				From 1.5 g	
Max. throughput *	100 items/min				80 items/min	
Speed ranges (Depends on package length and weighing operations per time unit)	Fixed speed in levels from 0.19 to 1.62 m/s					
Centre-to-centre distance of weighing belt B	600 mm	800 mm	1000 mm	1225 mm	1030 mm	1230 mm
Platform length A	660 mm	860 mm	1060 mm	1285 mm	1100 mm	1300 mm
Belt width E	400 mm	600 mm	500 mm	500 mm	700 mm	700 mm
Belt roller diameter F	60 mm	60 mm	60 mm	60 mm	70 mm	70 mm

* for $v > 2.0$ m/s

Parameter	WS 30 kg	WS 60 kg
Floor clearance	95 mm (±25) for BL and 125 (±25) for B	95 mm (±25) for BL and 125 (±25) for B
Transport medium	Belt	Belt
Drives	3 × 230/400 V _{AC} (+10% / -15%); 50 Hz (default), 60 Hz (optional); power output: 0.75 kW (default)	
Connected voltage	230 V _{AC} (+10% / -15%); 50/60 Hz (L1, N, PE)	
Power consumption	Approx. 1700 V _A	Approx. 1700 V _A
Feed direction	Right to left or left to right (please indicate when ordering)	
Working height (depends on design)	Max. 535 mm to 1040 mm Leg adjustment range: ±25 mm	500 mm to 1000 mm Leg adjustment range: ±25 mm
Permissible temperature range	+5°C to +40°C; for the product: -30°C to +80°C	
Cable length	5 m (default), max. 15 m (please indicate when ordering)	
Protection class	IP54 (default), IP65 (optional)	
Interfaces	Ethernet, fieldbus, RS422, RS232, current loop	
Machine safety	Design complies with the stipulations of EC Directive 2006/42/EC (Machinery)	
Dimensions	See technical diagrams, depends on application	
Weight	Approx. 260–350 kg	Approx. 300–350 kg

* depends on product, permissible imprecision and ambient conditions

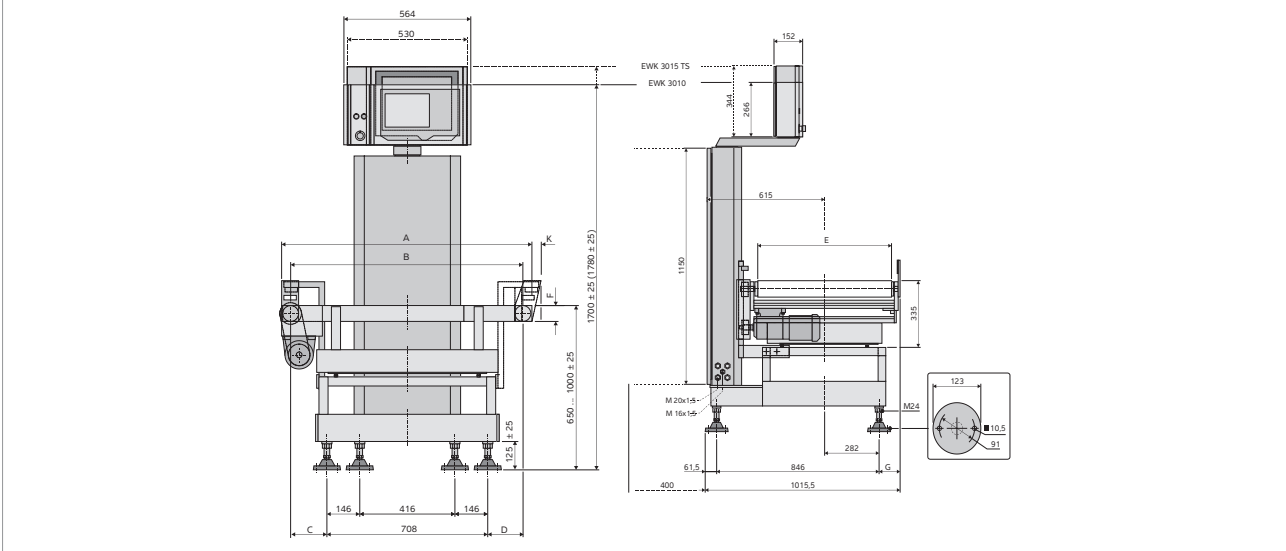
Indicator Weighing systems WS 30/60 kg B/BL

Parameter	Description
Control unit	Flat screen, 10.4" TFT colour display and keypad (EWK 3010)
Housing	Stainless steel housing 1.4301, IP65 protection class
Weight display	Choice of gross, net or differential weight
Operational display	Distribution, yield, throughput, average value chart, large weight readout
Operating modes	<ul style="list-style-type: none"> - Classifying weigher with Packaged Goods Regulation (AWC) evaluation - 3-way sorting or 4 freely selectable class limits - 3/5-way sorting
Additional standard functions	<ul style="list-style-type: none"> - Batch mode - 5-way classification - Time or path-based sorting - Automatic zero-setting - Statistics - Logging - Product data memory for 200 products - Inputs: ignore weigher, event counter, external error message - Outputs: feeder/batch, 3/5-way sorting, total counter/pre-selection counter, error message output <ul style="list-style-type: none"> - Program-controlled belt speed - Self-monitoring function, error reports - Auxiliary functions: test package, dialogues for diagnostics and service - Data stored in battery-backed memory - Choice of languages for program dialogues, user-selected - Connection to SPC systems
Options/advanced functions	<ul style="list-style-type: none"> - Belt speed with frequency converter (0.12–0.46 m/s; 0.23–0.91 m/s; 0.44–1.72 m/s) - Touchscreen 15" TFT colour display (EWK 3015) - Logging system with built-in printer (IP65)/for external printer - Trend controller with display - Approved for use in legal metrology - Interface for individual weight value output for external evaluation and connection to customer systems - Fieldbus interfaces: PROFIBUS, PROFINET, DeviceNet - Data communication: Ethernet, TCP/IP, XML client/server, prepared for SPC@Enterprise and OPC DA server - FDA 21 CFR Part 11 - Minebea Intec ProControl@Remote - USB Print <ul style="list-style-type: none"> - Completeness checks with floating mean value - 5 classifying outputs with pulse output or maintained output signals (e.g. for control of indicators or external counters) - Monitoring of average weight and repetitive rejections (with 3-way sorting only) - Automatic sampling - Volume evaluation - Measuring accuracy check - Package length and interval monitoring - Interval monitoring - Rejection monitoring of goods flow - Compressed air monitoring - Control of customer sorting equipment - EMERGENCY STOP button - Product flow monitoring - Digital lock

This technical data serves only as a product description and should not be interpreted as a legally binding quality guarantee.

Technical diagrams

Weighing system WS 60 kg B



Weighing system WS 60 kg BL

	A	B	C	D	E	F	G	K
WS30kgB	660	600	-85	-85	400	60	80	43
	860	800	46	46	600	60	101	43
	1060	1000	146	146	500	60	80	43
	1285	1225	161	156	500	60	80	30
WS30kgBL	660	600	-119	-119	400	60	60	43
	860	800	-19	-19	600	60	81	43
	1060	1000	81	81	500	60	60	43
	1285	1225	96	291	500	60	60	30
WS60kgB	1100	1030	161	156	700	70	108	30
	1300	1230	161	356	700	70	108	30
WS60kgBL	1100	1030	96	91	700	70	88	30
	1300	1230	96	291	700	70	88	30

All dimensions in mm

The products and solutions presented in this data sheet make major contributions in the following sectors:



The technical data given serves as a product description only and should not be understood as guaranteed properties in the legal sense.

Specifications subject to change without notice.
Rev. 08/2018

Minebea Intec Aachen GmbH & Co. KG
Am Gut Wolf 11
52070 Aachen, Germany
Phone +49.241.1827.0
sales.ac@minebea-intec.com
www.minebea-intec.com